

TURKU HANSDA LAPSA HEMRAM MAHAVIDYALAY

(Govt. Aided General Degree College affiliated to Burdwan University and Accredited by NAAC with B Grade)

VIII-Madhan, Mallarpur
PIN- 731216, West Bengal
www.thlmahavidyalay.ac.in



PO-Ganpur, Birbhum
Phone & Fax- 03461-262175
email-tlmprncipal@gmail.com

Criterion 1 – Curricular Aspects

1.4 Feedback System

Academic Year 2019-2020

The institution obtains feedback on the academic performance and ambiance of the institution from various stakeholders, such as Students, Teachers, Parents, Employers, Alumni, etc.

List of Documents:

1. Students Feedback Analysis Report
2. Teachers Feedback Analysis Report
3. Parents Feedback Analysis Report
4. Alumni Feedback Analysis Report
5. Employers Feedback Analysis Report


Principal
THLH Mahavidyalay
Madhan, Mallarpur, Ganpur
Birbhum, W.B.




Co-Ordinator, IQAC
Turku Hansda Lapsa Hemram Mahavidyalay
Mallarpur, Birbhum, 731216 (W.B.)

Feedback Analysis

Report of the Students' Library Feedback

STUDENTS' LIBRARY FEEDBACK FORM REGARDING LIBRARY SERVICES

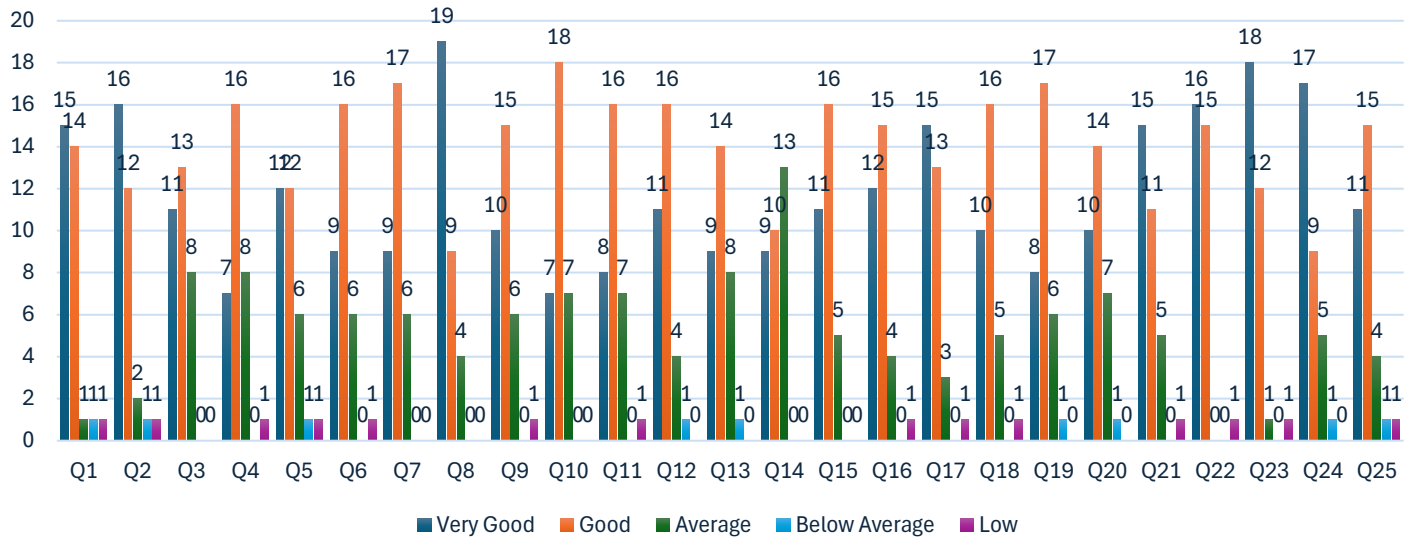
SESSION: 2019-2020

Questions Code	Survey Questions list
Q1	The college library duration 10am to 5pm is – a) very good, b) good, c) Average, d) below Avg. e) Low
Q2	The behavior of the Librarian is- a) very good, b) good, c)Average, d) below Avg. e) Low
Q3	Library Services of library are - a) very good, b) good, c) Average, d) below Avg. e) Low
Q4	Availability of Syllabus Oriented Course Books is - a) very good, b) good, c) Average, d) below Avg. e) Low
Q5	In the library the availability of Magazines / Journals is - a) very good, b) good, c) Average, d) below Avg. e) Low
Q6	In the library the availability of Newspapers/Employment News is - a) very good, b) good, c) Average, d) below Avg. e) Low
Q7	In the library the availability of Competitive Exam Books/General Knowledge Books is - a) very good, b) good, c) Average, d) below Avg. e) Low
Q8	The Reading Room Facility is - a) very good, b) good, c)Average, d) below Avg. e) Low
Q9	The Services of Efficient Library Catalogue/ OPAC (Online Catalogue) are - a) very good, b) good, c)Average, d) below Avg. e) Low
Q10	The Circulation Services are - a) very good, b) good, c) Average, d) below Avg. e) Low
Q11	The Reference Service is - a) very good, b) good, c) Average, d) below Avg. e) Low
Q12	Photocopying Service is - a) very good, b) good, c) Average, d) below Avg. e) Low
Q13	The Printout Facility is - a) very good, b) good, c) Average, d) below Avg. e) Low
Q14	The Internet and E-Mail Service is - a) very good, b) good, c) Average, d) below Avg. e) Low
Q15	E-Journals and E-Resources - a) very good, b) good, c) Average, d) below Avg. e) Low
Q16	Helping attitude of Library Staff is - a) very good/ 88, b) good, c) Average, d) below Avg. e) Low

Q17	The Promptness of the Library Staff is - a) very good, b) good, c) Average, d) below Avg. e) Low
Q18	The punctuality of the Library Staff is - a) very good, b) good, c) Average/ 14, d) below Avg./ 05 e) Low / 01
Q19	The Availability of Books is - a) very good, b) good, c) Average, d) below Avg. e) Low
Q20	In the library the Availability of Previous year University Questions/ Syllabus is - a) very good, b) good, c) Average, d) below Avg. e) Low
Q21	The Environment in cleanliness and ambience of library is - a) very good, b) good, c) Average, d) below Avg. e) Low
Q22	The Lighting and Ventilation are - a) very good, b) good, c) Average, d) below Avg. e) Low
Q23	In the Library Sitting Arrangement is - a) very good, b) good, c) Average, d) below Avg. e) Low
Q24	In the Library Discipline is - a) very good, b) good, c) Average, d) below Avg. e) Low
Q25	In the Library the Overall rating is - a) very good, b) good, c) Average, d) below Avg. e) Low

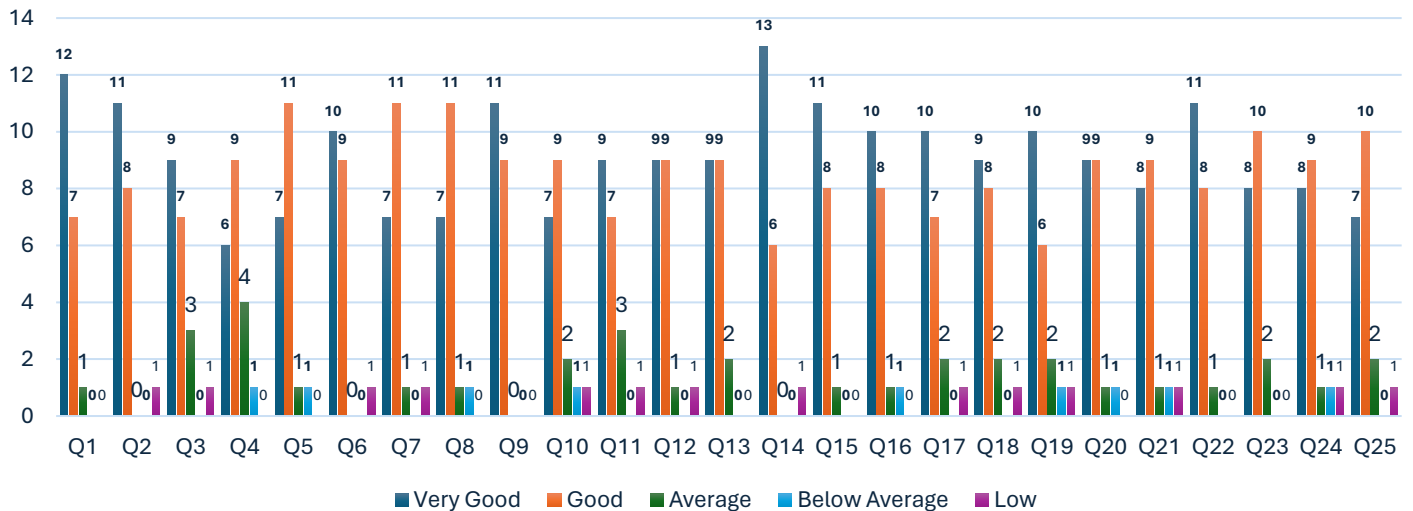
BHG						Ratio				
Question Code	Very Good	Good	Average	Below Average	Low	Very Good	Good	Average	Below Average	Low
Q1	15	14	1	1	1	47%	44%	3%	3%	3%
Q2	16	12	2	1	1	50%	38%	6%	3%	3%
Q3	11	13	8	0	0	34%	41%	25%	0%	0%
Q4	7	16	8	0	1	22%	50%	25%	0%	3%
Q5	12	12	6	1	1	38%	38%	19%	3%	3%
Q6	9	16	6	0	1	28%	50%	19%	0%	3%
Q7	9	17	6	0	0	28%	53%	19%	0%	0%
Q8	19	9	4	0	0	59%	28%	13%	0%	0%
Q9	10	15	6	0	1	31%	47%	19%	0%	3%
Q10	7	18	7	0	0	22%	56%	22%	0%	0%
Q11	8	16	7	0	1	25%	50%	22%	0%	3%
Q12	11	16	4	1	0	34%	50%	13%	3%	0%
Q13	9	14	8	1	0	28%	44%	25%	3%	0%
Q14	9	10	13	0	0	28%	31%	41%	0%	0%
Q15	11	16	5	0	0	34%	50%	16%	0%	0%
Q16	12	15	4	0	1	38%	47%	13%	0%	3%
Q17	15	13	3	0	1	47%	41%	9%	0%	3%
Q18	10	16	5	0	1	31%	50%	16%	0%	3%
Q19	8	17	6	1	0	25%	53%	19%	3%	0%
Q20	10	14	7	1	0	31%	44%	22%	3%	0%
Q21	15	11	5	0	1	47%	34%	16%	0%	3%
Q22	16	15	0	0	1	50%	47%	0%	0%	3%
Q23	18	12	1	0	1	56%	38%	3%	0%	3%
Q24	17	9	5	1	0	53%	28%	16%	3%	0%
Q25	11	15	4	1	1	34%	47%	13%	3%	3%

Feedback from Students of Bengali Department



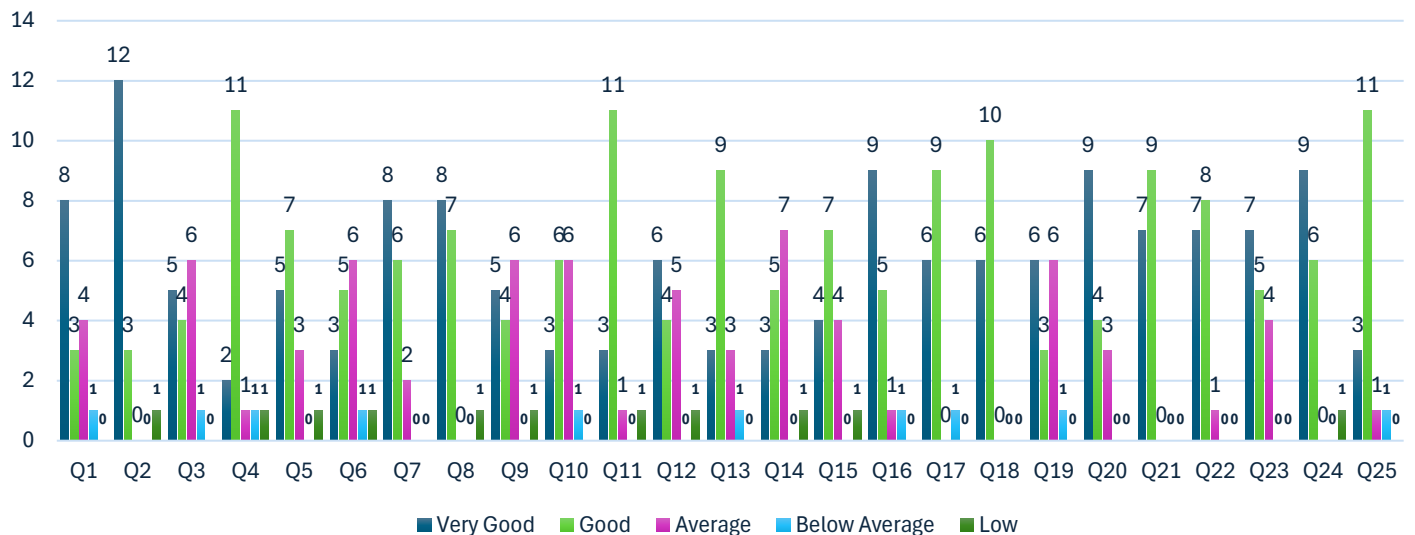
Question Code	SNTH					Ratio				
	Very Good	Good	Average	Below Average	Low	Very Good	Good	Average	Below Average	Low
Q1	12	7	1	0	0	60%	35%	5%	0%	0%
Q2	11	8	0	0	1	55%	40%	0%	0%	5%
Q3	9	7	3	0	1	45%	35%	15%	0%	5%
Q4	6	9	4	1	0	30%	45%	20%	5%	0%
Q5	7	11	1	1	0	35%	55%	5%	5%	0%
Q6	10	9	0	0	1	50%	45%	0%	0%	5%
Q7	7	11	1	0	1	35%	55%	5%	0%	5%
Q8	7	11	1	1	0	35%	55%	5%	5%	0%
Q9	11	9	0	0	0	55%	45%	0%	0%	0%
Q10	7	9	2	1	1	35%	45%	10%	5%	5%
Q11	9	7	3	0	1	45%	35%	15%	0%	5%
Q12	9	9	1	0	1	45%	45%	5%	0%	5%
Q13	9	9	2	0	0	45%	45%	10%	0%	0%
Q14	13	6	0	0	1	65%	30%	0%	0%	5%
Q15	11	8	1	0	0	55%	40%	5%	0%	0%
Q16	10	8	1	1	0	50%	40%	5%	5%	0%
Q17	10	7	2	0	1	50%	35%	10%	0%	5%
Q18	9	8	2	0	1	45%	40%	10%	0%	5%
Q19	10	6	2	1	1	50%	30%	10%	5%	5%
Q20	9	9	1	1	0	45%	45%	5%	5%	0%
Q21	8	9	1	1	1	40%	45%	5%	5%	5%
Q22	11	8	1	0	0	55%	40%	5%	0%	0%
Q23	8	10	2	0	0	40%	50%	10%	0%	0%
Q24	8	9	1	1	1	40%	45%	5%	5%	5%
Q25	7	10	2	0	1	35%	50%	10%	0%	5%

Feedback from Students of Santali Department



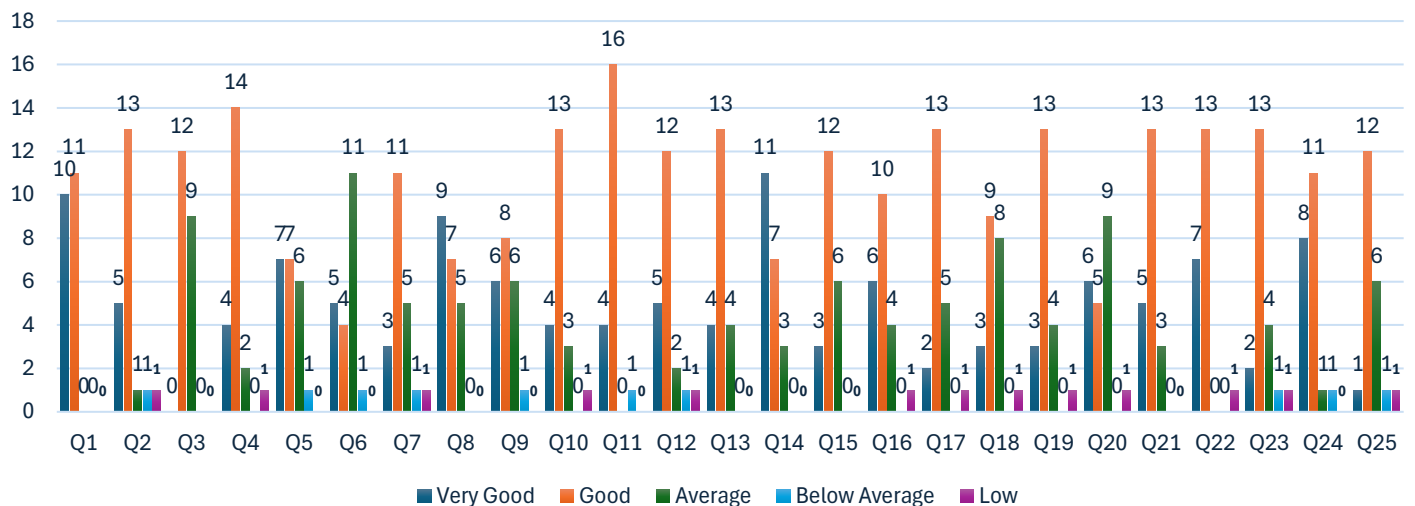
Question Code	GEOH					Ratio				
	Very Good	Good	Average	Below Average	Low	Very Good	Good	Average	Below Average	Low
Q1	8	3	4	1	0	50%	19%	25%	6%	0%
Q2	12	3	0	0	1	75%	19%	0%	0%	6%
Q3	5	4	6	1	0	31%	25%	38%	6%	0%
Q4	2	11	1	1	1	13%	69%	6%	6%	6%
Q5	5	7	3	0	1	31%	44%	19%	0%	6%
Q6	3	5	6	1	1	19%	31%	38%	6%	6%
Q7	8	6	2	0	0	50%	38%	13%	0%	0%
Q8	8	7	0	0	1	50%	44%	0%	0%	6%
Q9	5	4	6	0	1	31%	25%	38%	0%	6%
Q10	3	6	6	1	0	19%	38%	38%	6%	0%
Q11	3	11	1	0	1	19%	69%	6%	0%	6%
Q12	6	4	5	0	1	38%	25%	31%	0%	6%
Q13	3	9	3	1	0	19%	56%	19%	6%	0%
Q14	3	5	7	0	1	19%	31%	44%	0%	6%
Q15	4	7	4	0	1	25%	44%	25%	0%	6%
Q16	9	5	1	1	0	56%	31%	6%	6%	0%
Q17	6	9	0	1	0	38%	56%	0%	6%	0%
Q18	6	10	0	0	0	38%	63%	0%	0%	0%
Q19	6	3	6	1	0	38%	19%	38%	6%	0%
Q20	9	4	3	0	0	56%	25%	19%	0%	0%
Q21	7	9	0	0	0	44%	56%	0%	0%	0%
Q22	7	8	1	0	0	44%	50%	6%	0%	0%
Q23	7	5	4	0	0	44%	31%	25%	0%	0%
Q24	9	6	0	0	1	56%	38%	0%	0%	6%
Q25	3	11	1	1	0	19%	69%	6%	6%	0%

Feedback from Students of Geography Department



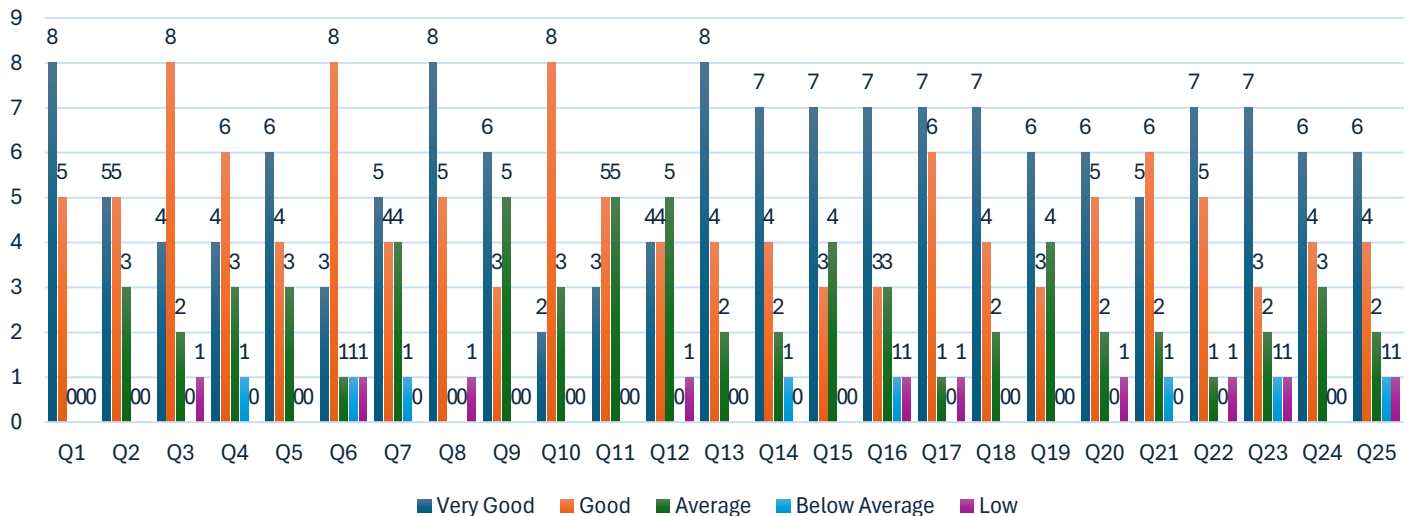
Question Code	SNSH					Ratio				
	Very Good	Good	Average	Below Average	Low	Very Good	Good	Average	Below Average	Low
Q1	10	11	0	0	0	48%	52%	0%	0%	0%
Q2	5	13	1	1	1	24%	62%	5%	5%	5%
Q3	0	12	9	0	0	0%	57%	43%	0%	0%
Q4	4	14	2	0	1	19%	67%	10%	0%	5%
Q5	7	7	6	1	0	33%	33%	29%	5%	0%
Q6	5	4	11	1	0	24%	19%	52%	5%	0%
Q7	3	11	5	1	1	14%	52%	24%	5%	5%
Q8	9	7	5	0	0	43%	33%	24%	0%	0%
Q9	6	8	6	1	0	29%	38%	29%	5%	0%
Q10	4	13	3	0	1	19%	62%	14%	0%	5%
Q11	4	16	0	1	0	19%	76%	0%	5%	0%
Q12	5	12	2	1	1	24%	57%	10%	5%	5%
Q13	4	13	4	0	0	19%	62%	19%	0%	0%
Q14	11	7	3	0	0	52%	33%	14%	0%	0%
Q15	3	12	6	0	0	14%	57%	29%	0%	0%
Q16	6	10	4	0	1	29%	48%	19%	0%	5%
Q17	2	13	5	0	1	10%	62%	24%	0%	5%
Q18	3	9	8	0	1	14%	43%	38%	0%	5%
Q19	3	13	4	0	1	14%	62%	19%	0%	5%
Q20	6	5	9	0	1	29%	24%	43%	0%	5%
Q21	5	13	3	0	0	24%	62%	14%	0%	0%
Q22	7	13	0	0	1	33%	62%	0%	0%	5%
Q23	2	13	4	1	1	10%	62%	19%	5%	5%
Q24	8	11	1	1	0	38%	52%	5%	5%	0%
Q25	1	12	6	1	1	5%	57%	29%	5%	5%

Feedback from Students of Sanskrit Department



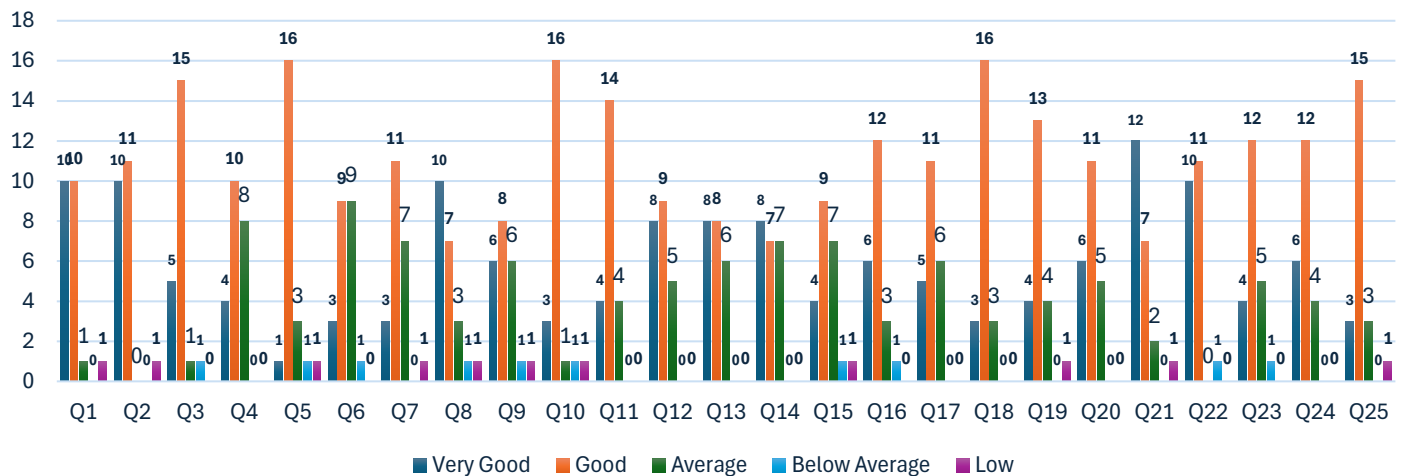
Question Code	HISH					Ratio				
	Very Good	Good	Average	Below Average	Low	Very Good	Good	Average	Below Average	Low
Q1	8	5	0	0	0	62%	38%	0%	0%	0%
Q2	5	5	3	0	0	38%	38%	23%	0%	0%
Q3	4	8	2	0	1	27%	53%	13%	0%	7%
Q4	4	6	3	1	0	29%	43%	21%	7%	0%
Q5	6	4	3	0	0	46%	31%	23%	0%	0%
Q6	3	8	1	1	1	21%	57%	7%	7%	7%
Q7	5	4	4	1	0	36%	29%	29%	7%	0%
Q8	8	5	0	0	1	57%	36%	0%	0%	7%
Q9	6	3	5	0	0	43%	21%	36%	0%	0%
Q10	2	8	3	0	0	15%	62%	23%	0%	0%
Q11	3	5	5	0	0	23%	38%	38%	0%	0%
Q12	4	4	5	0	1	29%	29%	36%	0%	7%
Q13	8	4	2	0	0	57%	29%	14%	0%	0%
Q14	7	4	2	1	0	50%	29%	14%	7%	0%
Q15	7	3	4	0	0	50%	21%	29%	0%	0%
Q16	7	3	3	1	1	47%	20%	20%	7%	7%
Q17	7	6	1	0	1	47%	40%	7%	0%	7%
Q18	7	4	2	0	0	54%	31%	15%	0%	0%
Q19	6	3	4	0	0	46%	23%	31%	0%	0%
Q20	6	5	2	0	1	43%	36%	14%	0%	7%
Q21	5	6	2	1	0	36%	43%	14%	7%	0%
Q22	7	5	1	0	1	50%	36%	7%	0%	7%
Q23	7	3	2	1	1	50%	21%	14%	7%	7%
Q24	6	4	3	0	0	46%	31%	23%	0%	0%
Q25	6	4	2	1	1	43%	29%	14%	7%	7%

Feedback from Students of History Department



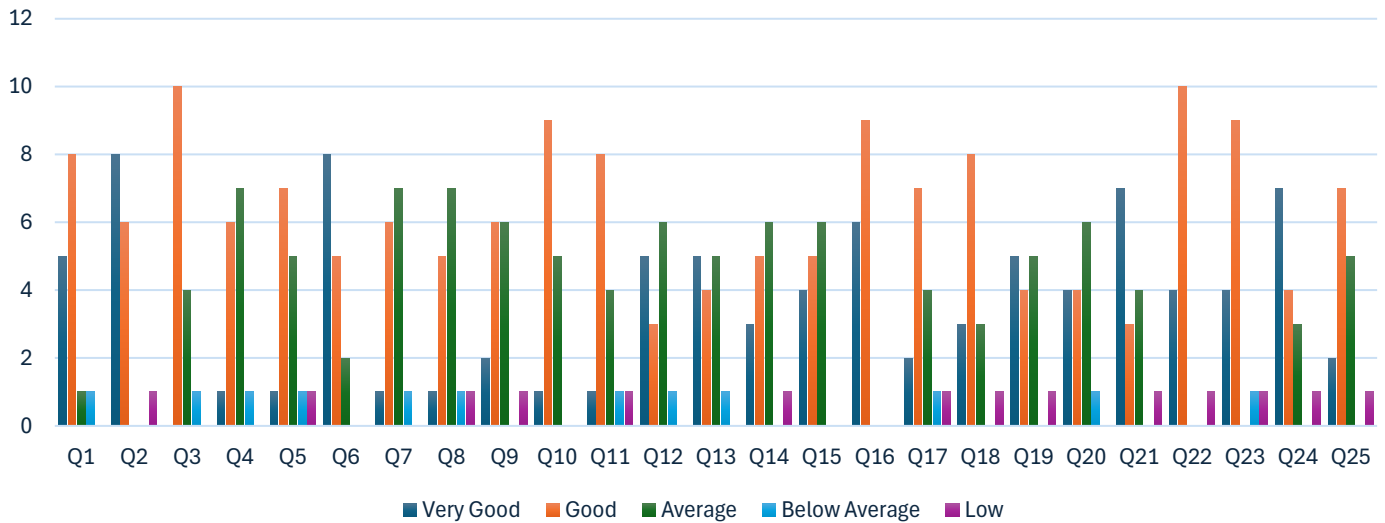
Question Code	ENGH					Ratio				
	Very Good	Good	Average	Below Average	Low	Very Good	Good	Average	Below Average	Low
Q1	10	10	1	0	1	45%	45%	5%	0%	5%
Q2	10	11	0	0	1	45%	50%	0%	0%	5%
Q3	5	15	1	1	0	23%	68%	5%	5%	0%
Q4	4	10	8	0	0	18%	45%	36%	0%	0%
Q5	1	16	3	1	1	5%	73%	14%	5%	5%
Q6	3	9	9	1	0	14%	41%	41%	5%	0%
Q7	3	11	7	0	1	14%	50%	32%	0%	5%
Q8	10	7	3	1	1	45%	32%	14%	5%	5%
Q9	6	8	6	1	1	27%	36%	27%	5%	5%
Q10	3	16	1	1	1	14%	73%	5%	5%	5%
Q11	4	14	4	0	0	18%	64%	18%	0%	0%
Q12	8	9	5	0	0	36%	41%	23%	0%	0%
Q13	8	8	6	0	0	36%	36%	27%	0%	0%
Q14	8	7	7	0	0	36%	32%	32%	0%	0%
Q15	4	9	7	1	1	18%	41%	32%	5%	5%
Q16	6	12	3	1	0	27%	55%	14%	5%	0%
Q17	5	11	6	0	0	23%	50%	27%	0%	0%
Q18	3	16	3	0	0	14%	73%	14%	0%	0%
Q19	4	13	4	0	1	18%	59%	18%	0%	5%
Q20	6	11	5	0	0	27%	50%	23%	0%	0%
Q21	12	7	2	0	1	55%	32%	9%	0%	5%
Q22	10	11	0	1	0	45%	50%	-5%	5%	5%
Q23	4	12	5	1	0	18%	55%	23%	5%	0%
Q24	6	12	4	0	0	27%	55%	18%	0%	0%
Q25	3	15	3	0	1	14%	68%	14%	0%	5%

Feedback from Students of English Department



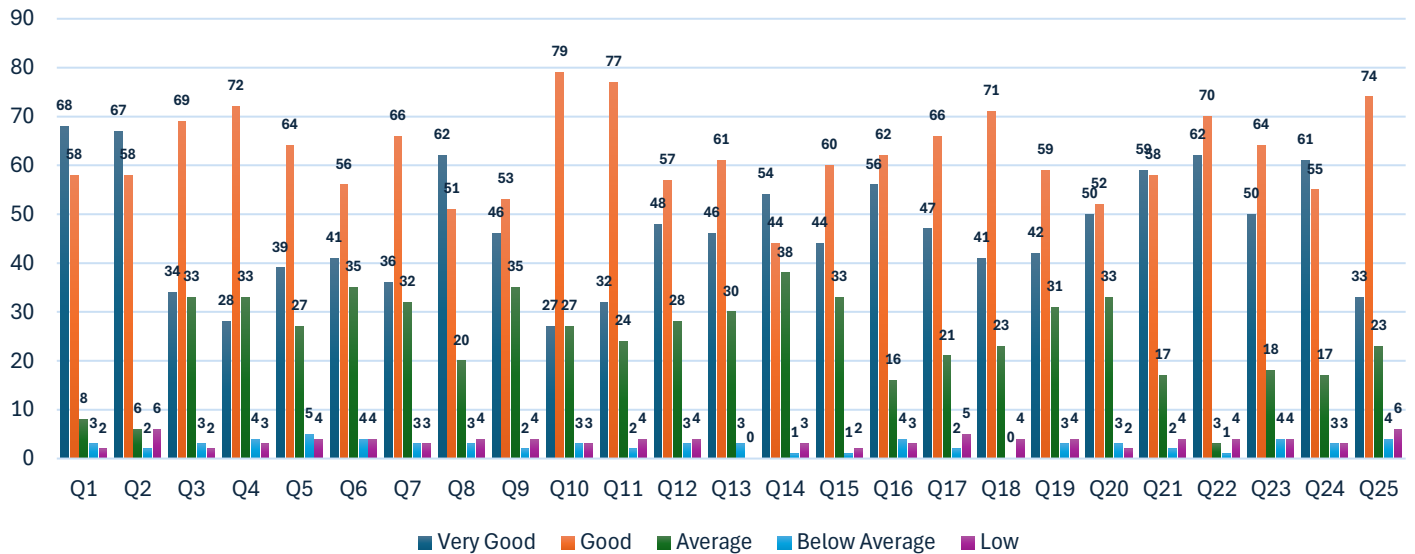
Question Code	MATH					Ratio				
	Very Good	Good	Average	Below Average	Low	Very Good	Good	Average	Below Average	Low
Q1	5	8	1	1	0	33%	53%	7%	7%	0%
Q2	8	6	0	0	1	53%	40%	0%	0%	7%
Q3	0	10	4	1	0	0%	67%	27%	7%	0%
Q4	1	6	7	1	0	7%	40%	47%	7%	0%
Q5	1	7	5	1	1	7%	47%	33%	7%	7%
Q6	8	5	2	0	0	53%	33%	13%	0%	0%
Q7	1	6	7	1	0	7%	40%	47%	7%	0%
Q8	1	5	7	1	1	7%	33%	47%	7%	7%
Q9	2	6	6	0	1	13%	40%	40%	0%	7%
Q10	1	9	5	0	0	7%	60%	33%	0%	0%
Q11	1	8	4	1	1	7%	53%	27%	7%	7%
Q12	5	3	6	1	0	33%	20%	40%	7%	0%
Q13	5	4	5	1	0	33%	27%	33%	7%	0%
Q14	3	5	6	0	1	20%	33%	40%	0%	7%
Q15	4	5	6	0	0	27%	33%	40%	0%	0%
Q16	6	9	0	0	0	40%	60%	0%	0%	0%
Q17	2	7	4	1	1	13%	47%	27%	7%	7%
Q18	3	8	3	0	1	20%	53%	20%	0%	7%
Q19	5	4	5	0	1	33%	27%	33%	0%	7%
Q20	4	4	6	1	0	27%	27%	40%	7%	0%
Q21	7	3	4	0	1	47%	20%	27%	0%	7%
Q22	4	10	0	0	1	27%	67%	0%	0%	7%
Q23	4	9	0	1	1	27%	60%	0%	7%	7%
Q24	7	4	3	0	1	47%	27%	20%	0%	7%
Q25	2	7	5	0	1	13%	47%	33%	0%	7%

Feedback from Students of Mathematics Department



All Honours students						Ratio				
Question Code	Very Good	Good	Average	Below Average	Low	Very Good	Good	Average	Below Average	Low
Q1	68	58	8	3	2	49%	42%	6%	2%	1%
Q2	67	58	6	2	6	48%	42%	4%	1%	4%
Q3	34	69	33	3	2	24%	49%	23%	2%	1%
Q4	28	72	33	4	3	20%	51%	24%	3%	2%
Q5	39	64	27	5	4	28%	46%	19%	4%	3%
Q6	41	56	35	4	4	29%	40%	25%	3%	3%
Q7	36	66	32	3	3	26%	47%	23%	2%	2%
Q8	62	51	20	3	4	44%	36%	14%	2%	3%
Q9	46	53	35	2	4	33%	38%	25%	1%	3%
Q10	27	79	27	3	3	19%	57%	19%	2%	2%
Q11	32	77	24	2	4	23%	55%	17%	1%	3%
Q12	48	57	28	3	4	34%	41%	20%	2%	3%
Q13	46	61	30	3	0	33%	44%	21%	2%	0%
Q14	54	44	38	1	3	39%	31%	27%	1%	2%
Q15	44	60	33	1	2	31%	43%	24%	1%	1%
Q16	56	62	16	4	3	40%	44%	11%	3%	2%
Q17	47	66	21	2	5	33%	47%	15%	1%	4%
Q18	41	71	23	0	4	29%	51%	17%	0%	3%
Q19	42	59	31	3	4	30%	42%	22%	2%	3%
Q20	50	52	33	3	2	36%	37%	24%	2%	1%
Q21	59	58	17	2	4	42%	41%	12%	1%	3%
Q22	62	70	3	1	4	44%	50%	2%	1%	3%
Q23	50	64	18	4	4	36%	46%	13%	3%	3%
Q24	61	55	17	3	3	44%	40%	12%	2%	2%
Q25	33	74	23	4	6	24%	53%	16%	3%	4%

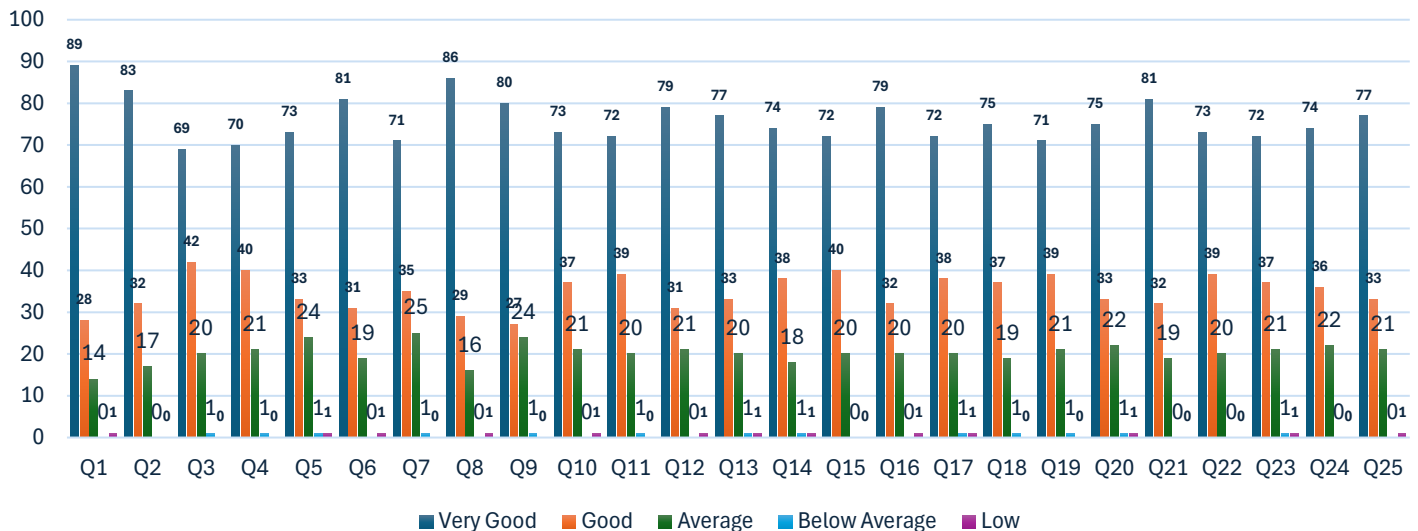
Feedback of all Honours Students



B.A./ B.Sc. General 2019-20

Question Code	BHG					Ratio				
	Very Good	Good	Average	Below Average	Low	Very Good	Good	Average	Below Average	Low
Q1	89	28	14	0	1	67%	21%	11%	0%	1%
Q2	83	32	17	0	0	63%	24%	13%	0%	0%
Q3	69	42	20	1	0	52%	32%	15%	1%	0%
Q4	70	40	21	1	0	53%	30%	16%	1%	0%
Q5	73	33	24	1	1	55%	25%	18%	1%	1%
Q6	81	31	19	0	1	61%	23%	14%	0%	1%
Q7	71	35	25	1	0	54%	27%	19%	1%	0%
Q8	86	29	16	0	1	65%	22%	12%	0%	1%
Q9	80	27	24	1	0	61%	20%	18%	1%	0%
Q10	73	37	21	0	1	55%	28%	16%	0%	1%
Q11	72	39	20	1	0	55%	30%	15%	1%	0%
Q12	79	31	21	0	1	60%	23%	16%	0%	1%
Q13	77	33	20	1	1	58%	25%	15%	1%	1%
Q14	74	38	18	1	1	56%	29%	14%	1%	1%
Q15	72	40	20	0	0	55%	30%	15%	0%	0%
Q16	79	32	20	0	1	60%	24%	15%	0%	1%
Q17	72	38	20	1	1	55%	29%	15%	1%	1%
Q18	75	37	19	1	0	57%	28%	14%	1%	0%
Q19	71	39	21	1	0	54%	30%	16%	1%	0%
Q20	75	33	22	1	1	57%	25%	17%	1%	1%
Q21	81	32	19	0	0	61%	24%	14%	0%	0%
Q22	73	39	20	0	0	55%	30%	15%	0%	0%
Q23	72	37	21	1	1	55%	28%	16%	1%	1%
Q24	74	36	22	0	0	56%	27%	17%	0%	0%
Q25	77	33	21	0	1	58%	25%	16%	0%	1%

Feedback from B.A./B.Sc. General Students



Conclusion

The feedback is analyzed and it is found that the students' assessment of various aspects regarding services of library is satisfactory. The points of weakness have been noted down and will be placed to the concerned authorities for improvement in future.

Report of the Students' Feedback 2019-20

STUDENT FEEDBACK, Academic Session: 2019-20

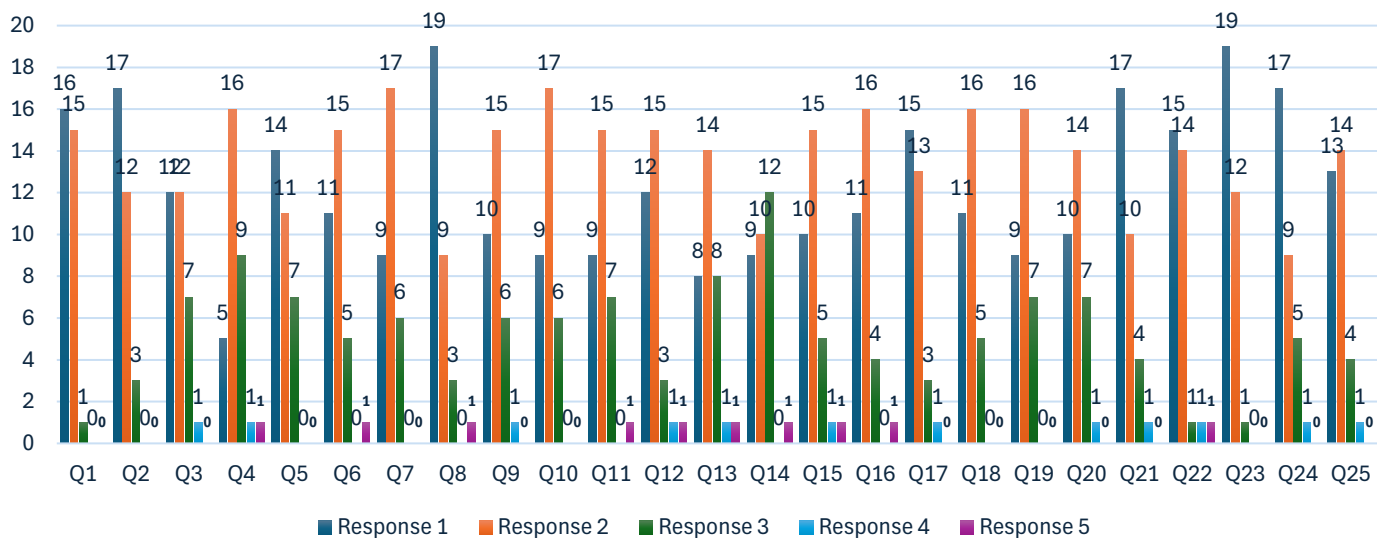
Questionnaire – I

Name of the Student: _____ Course: BA/B.Sc (Hons / Gen)

Question Code	Feedback Questions	
Q1	The syllabus was:	a) challenging, b) dull, c) relevant, d) irrelevant.
Q2	Your background for benefiting from the course was:	a) highly relevant, b) relevant, c) mostly irrelevant, d) cannot say.
Q3	Was the course conceptually difficult to understand?:	a) easy, b) manageable, c) difficult, d) very difficult.
Q4	How much of the syllabus was covered in class?:	a) 85 to 100%, b) 70 to 85%, c) 55 to 70%, d) less than 55%.
Q5	What is your opinion about the library materials for the course?:	a) excellent, b) adequate, c) inadequate, d) very poor.
Q6	Were you able to get the prescribed books from the library?:	a) easily, b) with some difficulty, c) with a great difficulty, d) not at all.
Q7	What is your opinion about the behavior of the Librarian?	a) excellent, b) very good, c) good, d) below Avg..
Q8	How well did the teacher prepare for class?:	a) thoroughly, b) satisfactorily, c) poorly, d) not at all.
Q9	How well was the teacher able to communicate?	a) effectively, b) invariably, c) satisfactorily, d) below Avg.ly.
Q10	Did the teacher encourage student participation in class?	a) Always, b) so often, c) sometimes, d) rarely.
Q11	If the teacher encourage student participation in class, which of the following methods were used?	a) encouraged Questions, b) discussion in class, c) discussion outside class, d) discussion individually.
Q12	How helpful was the teacher in advising?	a) always helpful, b) often helpful, c) sometimes helpful, d) unhelpful.
Q13	Was the teacher?	a) lovable and friendly, b) strict, c) indifferent, d) rude.
Q14	Did the internal assessment or Test Exam work?	a) fairly, b) regularly, c) helpfully, d) cannot say.
Q15	How did the teacher provide feedback on your performance?	a) regularly /irregularly, b) in time/late, c) with helpful comments, d) without comments.
Q16	Was there any opportunity for personal interaction with teachers?	a) Yes, b) to some extent, c) no, d) can't say.
Q17	Were you provided with a course and lecture outline at the beginning?	a) Yes, b) no.
Q18	Was it helpful?	a) Yes, b) no
Q19	Were outsider experts invited to address you?/Departmental seminar held?	a) Yes, b) no.
Q20	How do you rate the student-teacher relationship in the Department/College as a whole?	a) very good, b) good, c) satisfactory, d) unsatisfactory.
Q21	How do you find the College's administrative offices & Non-Teaching Staffs?	a) very helpful, b) helpful, c) indifferent, d) unhelpful.
Q22	How do you rate the health care facilities?	a) very good, b) good, c) Average, d) poor.
Q23	Did you participate in any of the extra- curricular activities of the Department /College?	a) often, b) sometimes, c) rarely, d) never.
Q24	After leaving the College how will you talk about it?	a) proudly, b) indifferently, c) disparagingly.

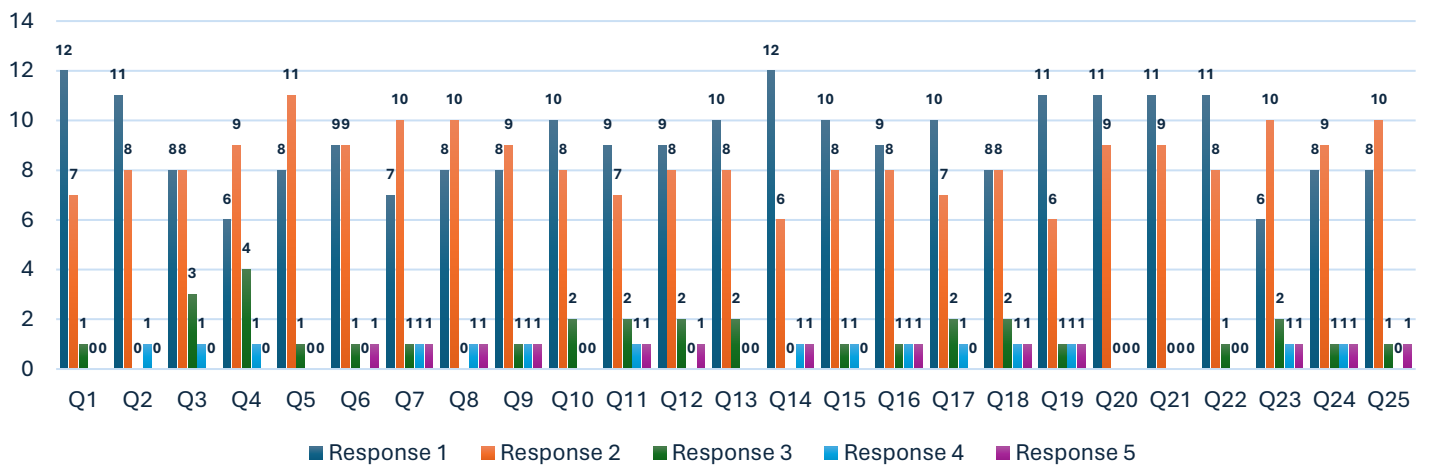
BHGH						Ratio				
Question Code	Response 1	Response 2	Response 3	Response 4	Response 5	Response 1	Response 2	Response 3	Response 4	Response 5
Q1	16	15	1	0	0	50%	47%	3%	0%	0%
Q2	17	12	3	0	0	53%	38%	9%	0%	0%
Q3	12	12	7	1	0	38%	38%	22%	3%	0%
Q4	5	16	9	1	1	16%	50%	28%	3%	3%
Q5	14	11	7	0	0	44%	34%	22%	0%	0%
Q6	11	15	5	0	1	34%	47%	16%	0%	3%
Q7	9	17	6	0	0	28%	53%	19%	0%	0%
Q8	19	9	3	0	1	59%	28%	9%	0%	3%
Q9	10	15	6	1	0	31%	47%	19%	3%	0%
Q10	9	17	6	0	0	28%	53%	19%	0%	0%
Q11	9	15	7	0	1	28%	47%	22%	0%	3%
Q12	12	15	3	1	1	38%	47%	9%	3%	3%
Q13	8	14	8	1	1	25%	44%	25%	3%	3%
Q14	9	10	12	0	1	28%	31%	38%	0%	3%
Q15	10	15	5	1	1	31%	47%	16%	3%	3%
Q16	11	16	4	0	1	34%	50%	13%	0%	3%
Q17	15	13	3	1	0	47%	41%	9%	3%	0%
Q18	11	16	5	0	0	34%	50%	16%	0%	0%
Q19	9	16	7	0	0	28%	50%	22%	0%	0%
Q20	10	14	7	1	0	31%	44%	22%	3%	0%
Q21	17	10	4	1	0	53%	31%	13%	3%	0%
Q22	15	14	1	1	1	47%	44%	3%	3%	3%
Q23	19	12	1	0	0	59%	38%	3%	0%	0%
Q24	17	9	5	1	0	53%	28%	16%	3%	0%
Q25	13	14	4	1	0	41%	44%	13%	3%	0%

Feedback from Students of Bengali Department



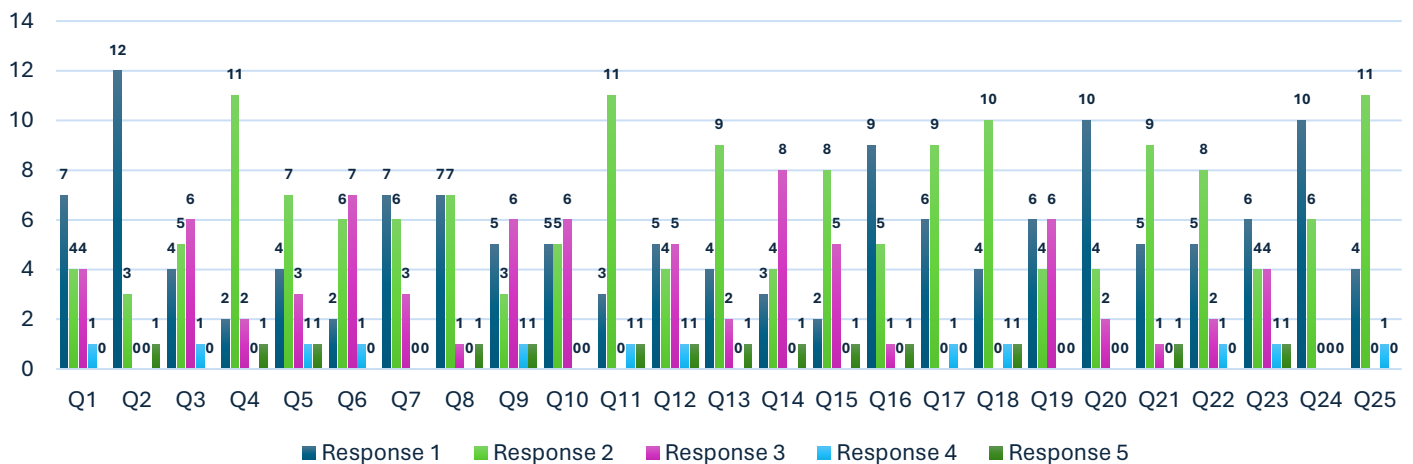
Question Code	SNTH					Ratio				
	Response 1	Response 2	Response 3	Response 4	Response 5	Response 1	Response 2	Response 3	Response 4	Response 5
Q1	12	7	1	0	0	60%	35%	5%	0%	0%
Q2	11	8	0	1	0	55%	40%	0%	5%	0%
Q3	8	8	3	1	0	40%	40%	15%	5%	0%
Q4	6	9	4	1	0	30%	45%	20%	5%	0%
Q5	8	11	1	0	0	40%	55%	5%	0%	0%
Q6	9	9	1	0	1	45%	45%	5%	0%	5%
Q7	7	10	1	1	1	35%	50%	5%	5%	5%
Q8	8	10	0	1	1	40%	50%	0%	5%	5%
Q9	8	9	1	1	1	40%	45%	5%	5%	5%
Q10	10	8	2	0	0	50%	40%	10%	0%	0%
Q11	9	7	2	1	1	45%	35%	10%	5%	5%
Q12	9	8	2	0	1	45%	40%	10%	0%	5%
Q13	10	8	2	0	0	50%	40%	10%	0%	0%
Q14	12	6	0	1	1	60%	30%	0%	5%	5%
Q15	10	8	1	1	0	50%	40%	5%	5%	0%
Q16	9	8	1	1	1	45%	40%	5%	5%	5%
Q17	10	7	2	1	0	50%	35%	10%	5%	0%
Q18	8	8	2	1	1	40%	40%	10%	5%	5%
Q19	11	6	1	1	1	55%	30%	5%	5%	5%
Q20	11	9	0	0	0	55%	45%	0%	0%	0%
Q21	11	9	0	0	0	55%	45%	0%	0%	0%
Q22	11	8	1	0	0	55%	40%	5%	0%	0%
Q23	6	10	2	1	1	30%	50%	10%	5%	5%
Q24	8	9	1	1	1	40%	45%	5%	5%	5%
Q25	8	10	1	0	1	40%	50%	5%	0%	5%

Feedback from Students of Santali Department



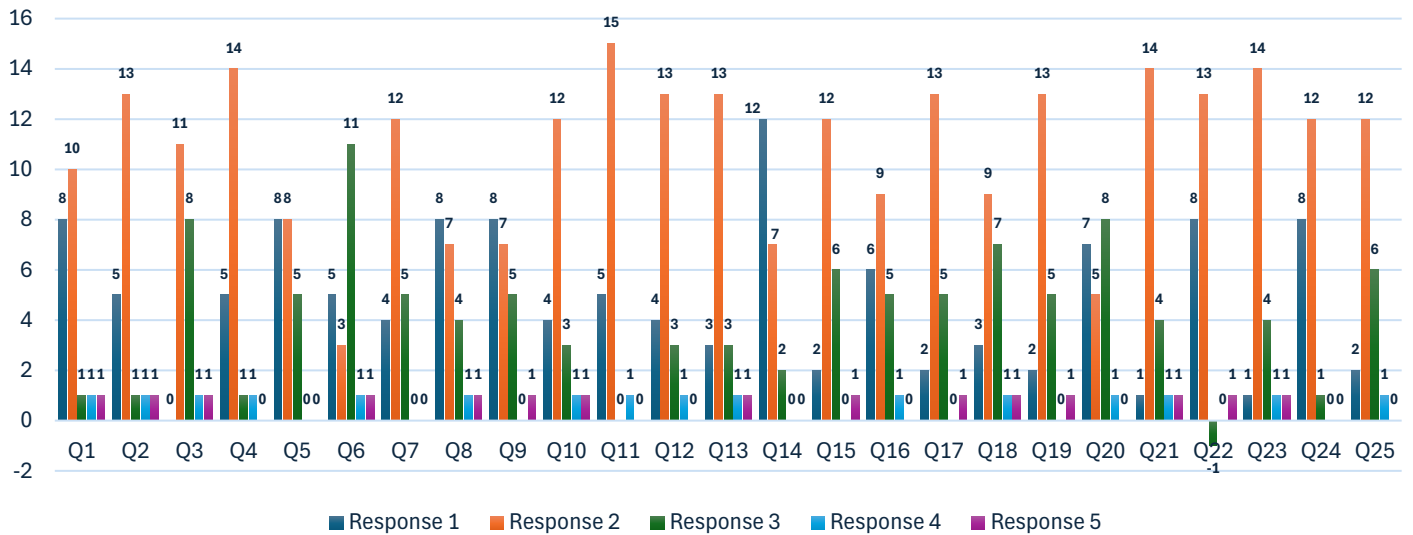
GEOH						Ratio				
Question Code	Response 1	Response 2	Response 3	Response 4	Response 5	Response 1	Response 2	Response 3	Response 4	Response 5
Q1	7	4	4	1	0	44%	25%	25%	6%	0%
Q2	12	3	0	0	1	75%	19%	0%	0%	6%
Q3	4	5	6	1	0	25%	31%	38%	6%	0%
Q4	2	11	2	0	1	13%	69%	13%	0%	6%
Q5	4	7	3	1	1	25%	44%	19%	6%	6%
Q6	2	6	7	1	0	13%	38%	44%	6%	0%
Q7	7	6	3	0	0	44%	38%	19%	0%	0%
Q8	7	7	1	0	1	44%	44%	6%	0%	6%
Q9	5	3	6	1	1	31%	19%	38%	6%	6%
Q10	5	5	6	0	0	31%	31%	38%	0%	0%
Q11	3	11	0	1	1	19%	69%	0%	6%	6%
Q12	5	4	5	1	1	31%	25%	31%	6%	6%
Q13	4	9	2	0	1	25%	56%	13%	0%	6%
Q14	3	4	8	0	1	19%	25%	50%	0%	6%
Q15	2	8	5	0	1	13%	50%	31%	0%	6%
Q16	9	5	1	0	1	56%	31%	6%	0%	6%
Q17	6	9	0	1	0	38%	56%	0%	6%	0%
Q18	4	10	0	1	1	25%	63%	0%	6%	6%
Q19	6	4	6	0	0	38%	25%	38%	0%	0%
Q20	10	4	2	0	0	63%	25%	13%	0%	0%
Q21	5	9	1	0	1	31%	56%	6%	0%	6%
Q22	5	8	2	1	0	31%	50%	13%	6%	0%
Q23	6	4	4	1	1	38%	25%	25%	6%	6%
Q24	10	6	0	0	0	63%	38%	0%	0%	0%
Q25	4	11	0	1	0	25%	69%	0%	6%	0%

Feedback from Students of Geography Department



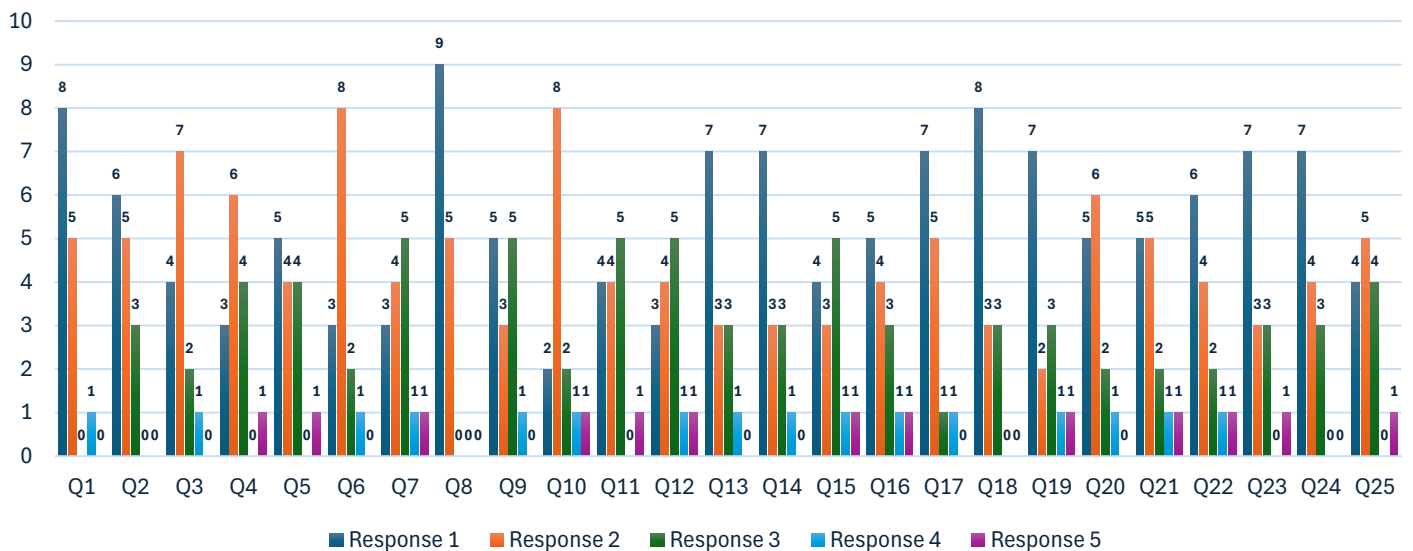
SNSH						Ratio				
Question Code	Response 1	Response 2	Response 3	Response 4	Response 5	Response 1	Response 2	Response 3	Response 4	Response 5
Q1	8	10	1	1	1	38%	48%	5%	5%	5%
Q2	5	13	1	1	1	24%	62%	5%	5%	5%
Q3	0	11	8	1	1	0%	52%	38%	5%	5%
Q4	5	14	1	1	0	24%	67%	5%	5%	0%
Q5	8	8	5	0	0	38%	38%	24%	0%	0%
Q6	5	3	11	1	1	24%	14%	52%	5%	5%
Q7	4	12	5	0	0	19%	57%	24%	0%	0%
Q8	8	7	4	1	1	38%	33%	19%	5%	5%
Q9	8	7	5	0	1	38%	33%	24%	0%	5%
Q10	4	12	3	1	1	19%	57%	14%	5%	5%
Q11	5	15	0	1	0	24%	71%	0%	5%	0%
Q12	4	13	3	1	0	19%	62%	14%	5%	0%
Q13	3	13	3	1	1	14%	62%	14%	5%	5%
Q14	12	7	2	0	0	57%	33%	10%	0%	0%
Q15	2	12	6	0	1	10%	57%	29%	0%	5%
Q16	6	9	5	1	0	29%	43%	24%	5%	0%
Q17	2	13	5	0	1	10%	62%	24%	0%	5%
Q18	3	9	7	1	1	14%	43%	33%	5%	5%
Q19	2	13	5	0	1	10%	62%	24%	0%	5%
Q20	7	5	8	1	0	33%	24%	38%	5%	0%
Q21	1	14	4	1	1	5%	67%	19%	5%	5%
Q22	8	13	-1	0	1	38%	62%	-5%	0%	5%
Q23	1	14	4	1	1	5%	67%	19%	5%	5%
Q24	8	12	1	0	0	38%	57%	5%	0%	0%
Q25	2	12	6	1	0	10%	57%	29%	5%	0%

Feedback from Students of Sanskrit Department



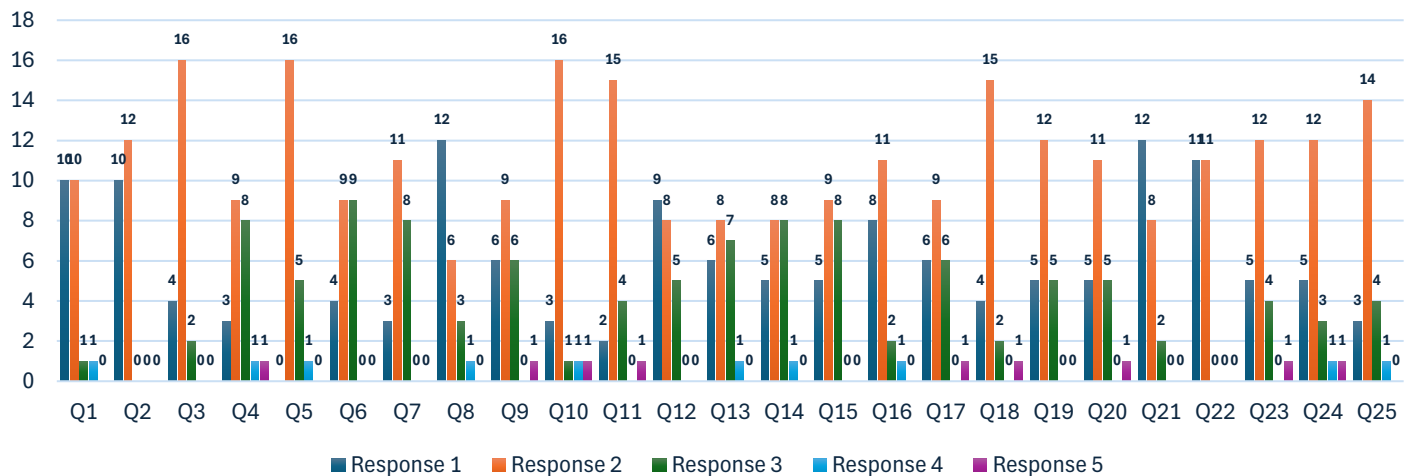
HISH						Ratio				
Question Code	Response 1	Response 2	Response 3	Response 4	Response 5	Response 1	Response 2	Response 3	Response 4	Response 5
Q1	8	5	0	1	0	57%	36%	0%	7%	0%
Q2	6	5	3	0	0	43%	36%	21%	0%	0%
Q3	4	7	2	1	0	29%	50%	14%	7%	0%
Q4	3	6	4	0	1	21%	43%	29%	0%	7%
Q5	5	4	4	0	1	36%	29%	29%	0%	7%
Q6	3	8	2	1	0	21%	57%	14%	7%	0%
Q7	3	4	5	1	1	21%	29%	36%	7%	7%
Q8	9	5	0	0	0	64%	36%	0%	0%	0%
Q9	5	3	5	1	0	36%	21%	36%	7%	0%
Q10	2	8	2	1	1	14%	57%	14%	7%	7%
Q11	4	4	5	0	1	29%	29%	36%	0%	7%
Q12	3	4	5	1	1	21%	29%	36%	7%	7%
Q13	7	3	3	1	0	50%	21%	21%	7%	0%
Q14	7	3	3	1	0	50%	21%	21%	7%	0%
Q15	4	3	5	1	1	29%	21%	36%	7%	7%
Q16	5	4	3	1	1	36%	29%	21%	7%	7%
Q17	7	5	1	1	0	50%	36%	7%	7%	0%
Q18	8	3	3	0	0	57%	21%	21%	0%	0%
Q19	7	2	3	1	1	50%	14%	21%	7%	7%
Q20	5	6	2	1	0	36%	43%	14%	7%	0%
Q21	5	5	2	1	1	36%	36%	14%	7%	7%
Q22	6	4	2	1	1	43%	29%	14%	7%	7%
Q23	7	3	3	0	1	50%	21%	21%	0%	7%
Q24	7	4	3	0	0	50%	29%	21%	0%	0%
Q25	4	5	4	0	1	29%	36%	29%	0%	7%

Feedback from Students of History Department



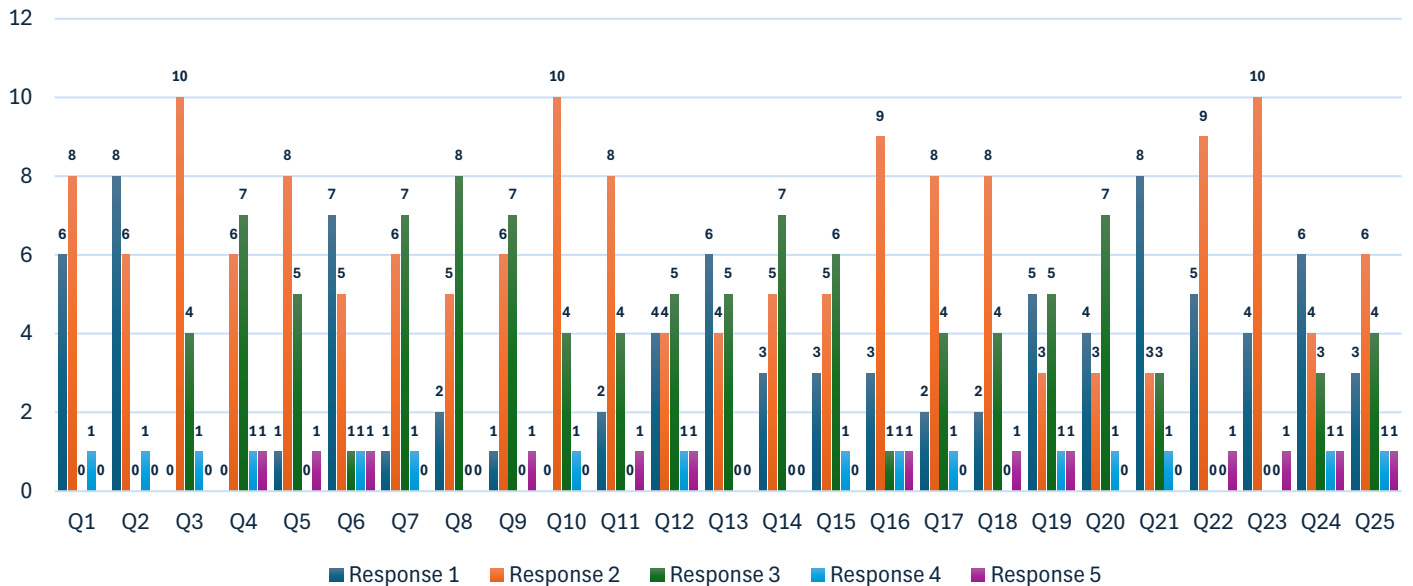
ENGH						Ratio				
Question Code	Response 1	Response 2	Response 3	Response 4	Response 5	Response 1	Response 2	Response 3	Response 4	Response 5
Q1	10	10	1	1	0	45%	45%	5%	5%	0%
Q2	10	12	0	0	0	45%	55%	0%	0%	0%
Q3	4	16	2	0	0	18%	73%	9%	0%	0%
Q4	3	9	8	1	1	14%	41%	36%	5%	5%
Q5	0	16	5	1	0	0%	73%	23%	5%	0%
Q6	4	9	9	0	0	18%	41%	41%	0%	0%
Q7	3	11	8	0	0	14%	50%	36%	0%	0%
Q8	12	6	3	1	0	55%	27%	14%	5%	0%
Q9	6	9	6	0	1	27%	41%	27%	0%	5%
Q10	3	16	1	1	1	14%	73%	5%	5%	5%
Q11	2	15	4	0	1	9%	68%	18%	0%	5%
Q12	9	8	5	0	0	41%	36%	23%	0%	0%
Q13	6	8	7	1	0	27%	36%	32%	5%	0%
Q14	5	8	8	1	0	23%	36%	36%	5%	0%
Q15	5	9	8	0	0	23%	41%	36%	0%	0%
Q16	8	11	2	1	0	36%	50%	9%	5%	0%
Q17	6	9	6	0	1	27%	41%	27%	0%	5%
Q18	4	15	2	0	1	18%	68%	9%	0%	5%
Q19	5	12	5	0	0	23%	55%	23%	0%	0%
Q20	5	11	5	0	1	23%	50%	23%	0%	5%
Q21	12	8	2	0	0	55%	36%	9%	0%	0%
Q22	11	11	0	0	0	50%	50%	0%	0%	0%
Q23	5	12	4	0	1	23%	55%	18%	0%	5%
Q24	5	12	3	1	1	23%	55%	14%	5%	5%
Q25	3	14	4	1	0	14%	64%	18%	5%	0%

Feedback from Students of English Department



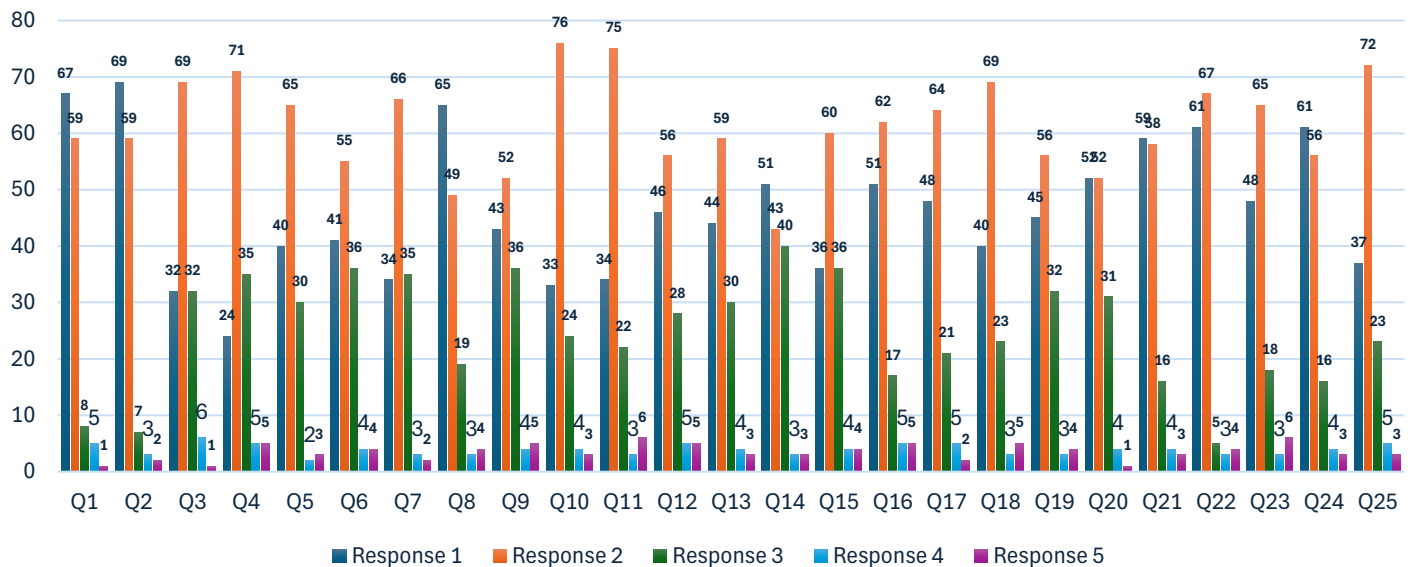
MATH						Ratio				
Question Code	Response 1	Response 2	Response 3	Response 4	Response 5	Response 1	Response 2	Response 3	Response 4	Response 5
Q1	6	8	0	1	0	40%	53%	0%	7%	0%
Q2	8	6	0	1	0	53%	40%	0%	7%	0%
Q3	0	10	4	1	0	0%	67%	27%	7%	0%
Q4	0	6	7	1	1	0%	40%	47%	7%	7%
Q5	1	8	5	0	1	7%	53%	33%	0%	7%
Q6	7	5	1	1	1	47%	33%	7%	7%	7%
Q7	1	6	7	1	0	7%	40%	47%	7%	0%
Q8	2	5	8	0	0	13%	33%	53%	0%	0%
Q9	1	6	7	0	1	7%	40%	47%	0%	7%
Q10	0	10	4	1	0	0%	67%	27%	7%	0%
Q11	2	8	4	0	1	13%	53%	27%	0%	7%
Q12	4	4	5	1	1	27%	27%	33%	7%	7%
Q13	6	4	5	0	0	40%	27%	33%	0%	0%
Q14	3	5	7	0	0	20%	33%	47%	0%	0%
Q15	3	5	6	1	0	20%	33%	40%	7%	0%
Q16	3	9	1	1	1	20%	60%	7%	7%	7%
Q17	2	8	4	1	0	13%	53%	27%	7%	0%
Q18	2	8	4	0	1	13%	53%	27%	0%	7%
Q19	5	3	5	1	1	33%	20%	33%	7%	7%
Q20	4	3	7	1	0	27%	20%	47%	7%	0%
Q21	8	3	3	1	0	53%	20%	20%	7%	0%
Q22	5	9	0	0	1	33%	60%	0%	0%	7%
Q23	4	10	0	0	1	27%	67%	0%	0%	7%
Q24	6	4	3	1	1	40%	27%	20%	7%	7%
Q25	3	6	4	1	1	20%	40%	27%	7%	7%

Feedback from Students of Mathematics Department



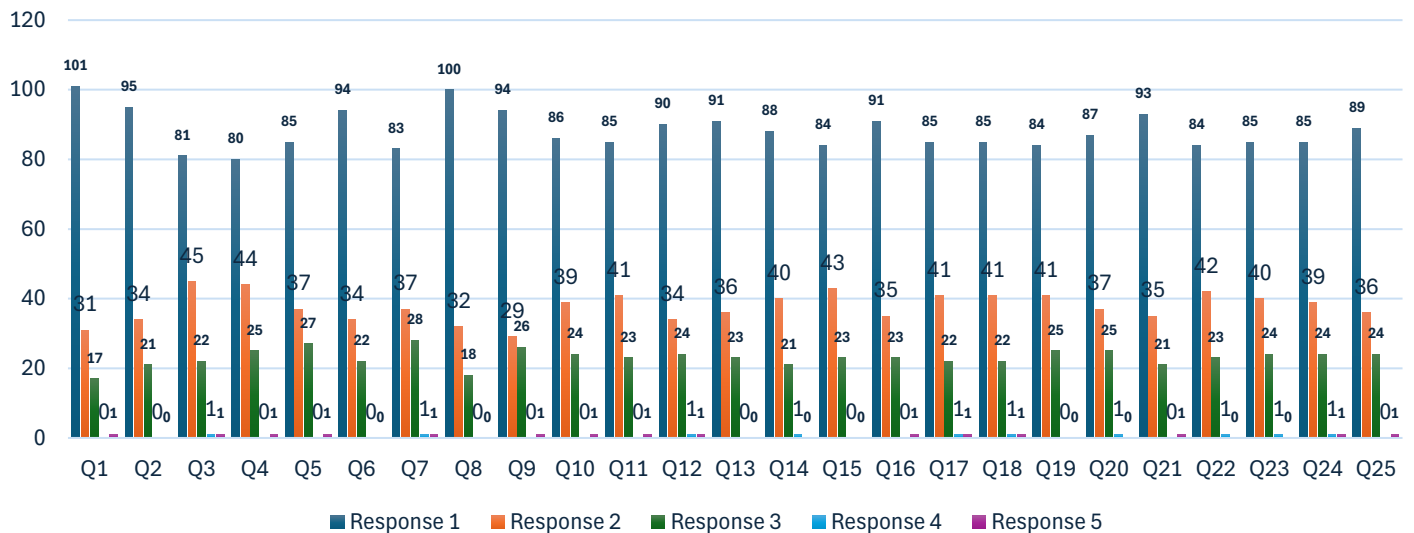
All Honours students						Ratio				
Question Code	Response 1	Response 2	Response 3	Response 4	Response 5	Response 1	Response 2	Response 3	Response 4	Response 5
Q1	67	59	8	5	1	48%	42%	6%	4%	1%
Q2	69	59	7	3	2	49%	42%	5%	2%	1%
Q3	32	69	32	6	1	23%	49%	23%	4%	1%
Q4	24	71	35	5	5	17%	51%	25%	4%	4%
Q5	40	65	30	2	3	29%	46%	21%	1%	2%
Q6	41	55	36	4	4	29%	39%	26%	3%	3%
Q7	34	66	35	3	2	24%	47%	25%	2%	1%
Q8	65	49	19	3	4	46%	35%	14%	2%	3%
Q9	43	52	36	4	5	31%	37%	26%	3%	4%
Q10	33	76	24	4	3	24%	54%	17%	3%	2%
Q11	34	75	22	3	6	24%	54%	16%	2%	4%
Q12	46	56	28	5	5	33%	40%	20%	4%	4%
Q13	44	59	30	4	3	31%	42%	21%	3%	2%
Q14	51	43	40	3	3	36%	31%	29%	2%	2%
Q15	36	60	36	4	4	26%	43%	26%	3%	3%
Q16	51	62	17	5	5	36%	44%	12%	4%	4%
Q17	48	64	21	5	2	34%	46%	15%	4%	1%
Q18	40	69	23	3	5	29%	49%	16%	2%	4%
Q19	45	56	32	3	4	32%	40%	23%	2%	3%
Q20	52	52	31	4	1	37%	37%	22%	3%	1%
Q21	59	58	16	4	3	42%	41%	11%	3%	2%
Q22	61	67	5	3	4	44%	48%	4%	2%	3%
Q23	48	65	18	3	6	34%	46%	13%	2%	4%
Q24	61	56	16	4	3	44%	40%	11%	3%	2%
Q25	37	72	23	5	3	26%	51%	16%	4%	2%

Feedback of all Honours Students



All General Students 2019-20						Ratio				
Question Code	Response 1	Response 2	Response 3	Response 4	Response 5	Response 1	Response 2	Response 3	Response 4	Response 5
Q1	101	31	17	0	1	67%	21%	11%	0%	1%
Q2	95	34	21	0	0	63%	23%	14%	0%	0%
Q3	81	45	22	1	1	54%	30%	15%	1%	1%
Q4	80	44	25	0	1	53%	29%	17%	0%	1%
Q5	85	37	27	0	1	57%	25%	18%	0%	1%
Q6	94	34	22	0	0	63%	23%	15%	0%	0%
Q7	83	37	28	1	1	55%	25%	19%	1%	1%
Q8	100	32	18	0	0	67%	21%	12%	0%	0%
Q9	94	29	26	0	1	63%	19%	17%	0%	1%
Q10	86	39	24	0	1	57%	26%	16%	0%	1%
Q11	85	41	23	0	1	57%	27%	15%	0%	1%
Q12	90	34	24	1	1	60%	23%	16%	1%	1%
Q13	91	36	23	0	0	61%	24%	15%	0%	0%
Q14	88	40	21	1	0	59%	27%	14%	1%	0%
Q15	84	43	23	0	0	56%	29%	15%	0%	0%
Q16	91	35	23	0	1	61%	23%	15%	0%	1%
Q17	85	41	22	1	1	57%	27%	15%	1%	1%
Q18	85	41	22	1	1	57%	27%	15%	1%	1%
Q19	84	41	25	0	0	56%	27%	17%	0%	0%
Q20	87	37	25	1	0	58%	25%	17%	1%	0%
Q21	93	35	21	0	1	62%	23%	14%	0%	1%
Q22	84	42	23	1	0	56%	28%	15%	1%	0%
Q23	85	40	24	1	0	57%	27%	16%	1%	0%
Q24	85	39	24	1	1	57%	26%	16%	1%	1%
Q25	89	36	24	0	1	59%	24%	16%	0%	1%

Feedback from B.A/B.Sc General Students



Conclusion

The feedback is analyzed and it is found that the students' assessment of various aspects regarding services of library is satisfactory. The points of weakness have been noted down and will be placed to the concerned authorities for improvement in future.

FEEDBACK FROM ALUMNI
ACADEMIC SESSION: 2019-20

Name: Mr./Ms/Mrs. Sex (M/F): Age (years):
Dept.: Year of Study: Occupation:

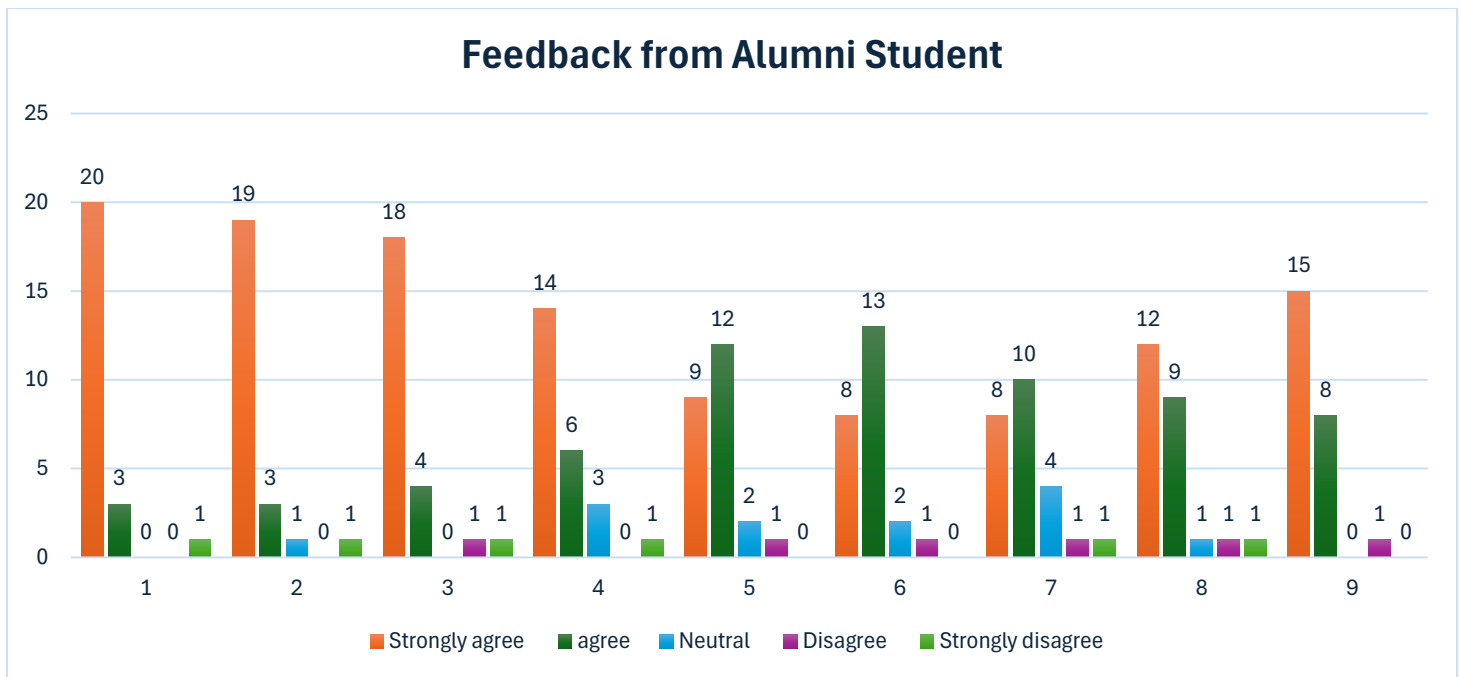
MAKE A TICK () MARK IN THE APPROPRIATE CELL:

- 10. I feel proud to be the student of THLH Mahavidyalay
- 11. The learning I had in the College is useful in my career
- 12. The developments in the College in recent years are appreciative
- 13. The new courses introduced meet contemporary requirements
- 14. THLH Mahavidyalay is involving alumni in its activities
- 15. The alumni have a role to play in academically strengthening the college further
- 16. The alumni have a role to play in financially strengthening the college
- 17. The college administration should take initiative to efficiently enroll and strengthen the alumni-association
- 18. Formation of Alumni Association is a step in the right direction

N. B. (a) Strongly Agree, (b) Agree, (c) Neutral, (d) Disagree, (e) Strongly Disagree

Feedback Report of the Alumni Association 2019-20

Alumni Association						Ratio				
Question Code	Strongly agree	agree	Neutral	Disagree	Strongly disagree	Strongly agree	agree	Neutral	Disagree	Strongly disagree
Q1	20	3	0	0	1	83%	13%	0%	0%	4%
Q2	19	3	1	0	1	79%	13%	4%	0%	4%
Q3	18	4	0	1	1	75%	17%	0%	4%	4%
Q4	14	6	3	0	1	58%	25%	13%	0%	4%
Q5	9	12	2	1	0	38%	50%	8%	4%	0%
Q6	8	13	2	1	0	33%	54%	8%	4%	0%
Q7	8	10	4	1	1	33%	42%	17%	4%	4%
Q8	12	9	1	1	1	50%	38%	4%	4%	4%
Q9	15	8	0	1	0	63%	33%	0%	4%	0%



Conclusion

The feedback is analysed and it is found that the Alumni's assessment of various aspects regarding academy and administration of the college is satisfactory. The points of weakness have been noted down and will be placed to the concerned authorities for improvement for future.

Report of the Guardians' Feedback 2019-20

FEEDBACK FROM PARENTS, ACADEMIC SESSION: 2019-20

Name: Mr./Ms/Mrs. Sex (M/F): Age (years):
Education Occupation:.....

Ward Name:.....Dept:.....

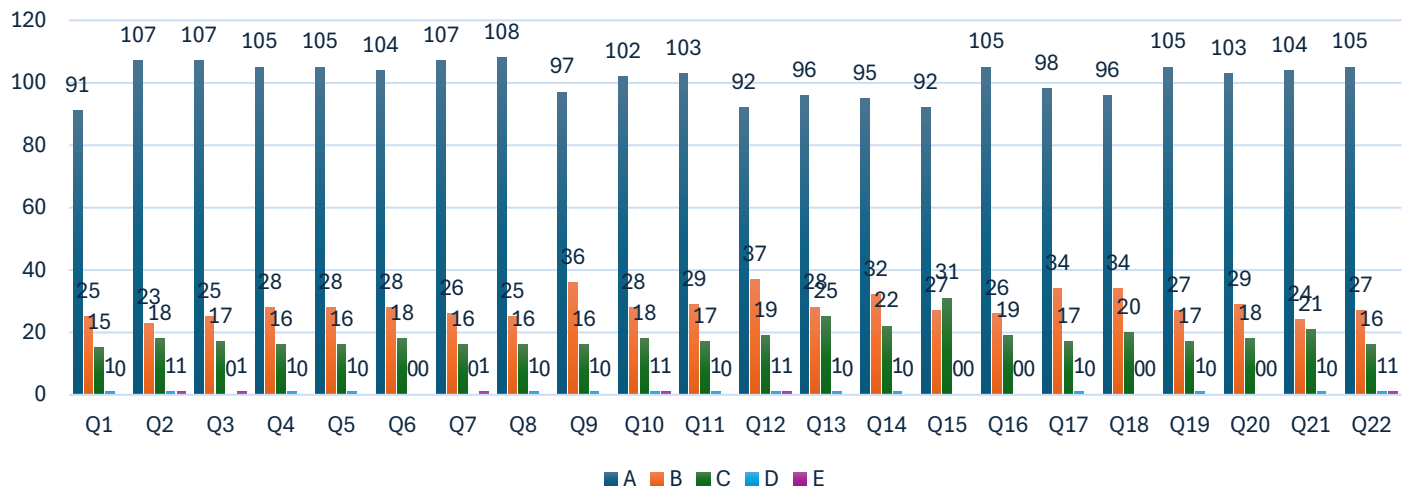
23. Getting admission in the College for my ward is a matter of pride for me
24. The admission process in the College is fair and accurate
25. My ward is improving his/her knowledge base through interaction with professors of the College
26. The discipline in the College is good
27. The atmosphere in the College is conducive for learning
28. There is a positive change in the behaviour of my ward after joining the College
29. Class culture in this College is praise worthy
30. I have great respect to the THLH Mahavidyalay
31. THLH Mahavidyalay is one of the best Colleges
32. The College information is accessible to all
33. THLH Mahavidyalay website is very informative regularly updated
34. The curriculum of the course is well designed and promotes learning experience of the students
35. Employability is given focus in the Curriculum
36. The curriculum incorporates recent changes in the area
37. Examination results are declared timely
38. The College Employees are cooperative
39. My Ward is receiving various Services such as Govt. Scholarships, Free Ships from the College regularly
40. The changes introduced in the College in recent years are progressive
41. Student-Teacher inter-personal relationship is very much cordial in Department
42. The changes introduced in the Department in recent years are progressive
43. Various Academic & co-curricular activities such as Seminar, Workshop, Educational Tour, Field Survey, NSS, Blood Donation, YPC, Sports are organized by the college & Department regularly
44. Library/Laboratory/Internet facility is very good in the college

N.B. (a) Strongly Agreed (b) Agreed, (c)Neutral, (d) Disagreed, (e)Strongly Disagreed

Guardian feedback 2019-20

Guardian feedback 2019-20						Ratio				
Sl No.	A	B	C	D	E	A	B	C	D	E
Q1	91	25	15	1	0	69%	19%	11%	1%	0%
Q2	107	23	18	1	1	71%	15%	12%	1%	1%
Q3	107	25	17	0	1	71%	17%	11%	0%	1%
Q4	105	28	16	1	0	70%	19%	11%	1%	0%
Q5	105	28	16	1	0	70%	19%	11%	1%	0%
Q6	104	28	18	0	0	69%	19%	12%	0%	0%
Q7	107	26	16	0	1	71%	17%	11%	0%	1%
Q8	108	25	16	1	0	72%	17%	11%	1%	0%
Q9	97	36	16	1	0	65%	24%	11%	1%	0%
Q10	102	28	18	1	1	68%	19%	12%	1%	1%
Q11	103	29	17	1	0	69%	19%	11%	1%	0%
Q12	92	37	19	1	1	61%	25%	13%	1%	1%
Q13	96	28	25	1	0	64%	19%	17%	1%	0%
Q14	95	32	22	1	0	63%	21%	15%	1%	0%
Q15	92	27	31	0	0	61%	18%	21%	0%	0%
Q16	105	26	19	0	0	70%	17%	13%	0%	0%
Q17	98	34	17	1	0	65%	23%	11%	1%	0%
Q18	96	34	20	0	0	64%	23%	13%	0%	0%
Q19	105	27	17	1	0	70%	18%	11%	1%	0%
Q20	103	29	18	0	0	69%	19%	12%	0%	0%
Q21	104	24	21	1	0	69%	16%	14%	1%	0%
Q22	105	27	16	1	1	70%	18%	11%	1%	1%

Feedback from Guardians



Conclusion

The feedback is analyzed and it is found that the Guardian's assessment of various aspects regarding academy and administration of the college is satisfactory. The points of weakness have been noted down and will be placed to the concerned authorities for improvement for future.